

STRAIGHT SPLICE DIMENSIONS - Inches

AWG	"B"	"D"
600 Volt 14, 12 or 10 Solid	2"	1 1/2"
600 Volt 8, 6, or 4 Stranded 2 1/2"	1 1/2"	1"
5000 Volt 8 Solid	3 1/4"	2"
600 Volt 14, 12, or 10 Solid	2"	1 1/2"

T-SPLICE DIMENSIONS - Inches

AWG	"B"	"D"
600 Volt 14, 12, or 10 Solid	2"	1 1/2"

600 VOLT "T" SPLICE
T Up to 10 AWG only
"C" = Connector length

PROCEDURE

- Remove insulation from each conductor to distance 1/2" Cx 1/2" and pencil to dimension D. Roughen penicillin.
- Train conductors and place connector, centering over banded cable ends.
- Crimp and solder connector.
- Insulate according to Method M unless otherwise specified.

ALTERNATE 600 VOLT 1" SPLICE ELECTRICAL SPRING CONNECTOR
No. 14 AWG and larger

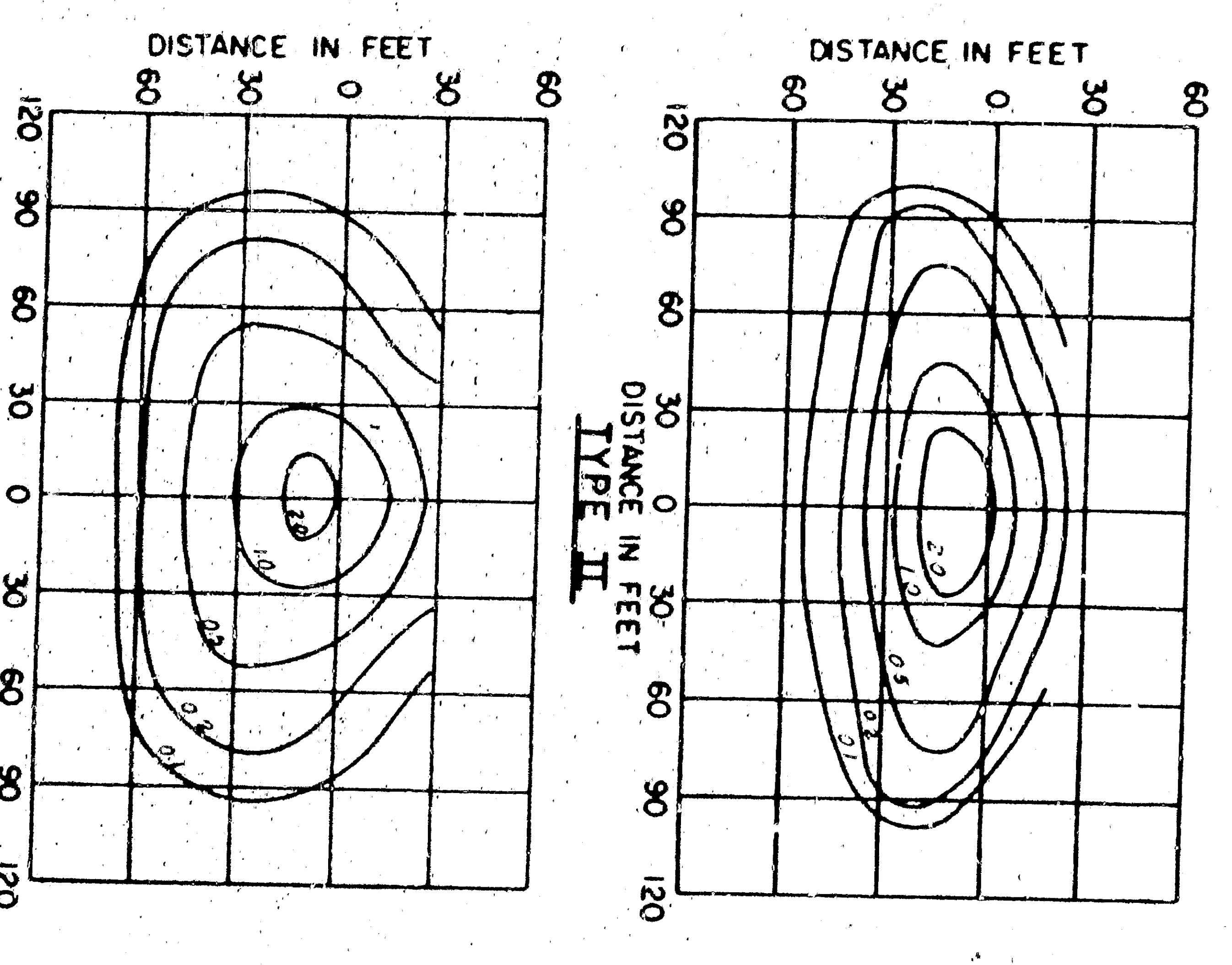
INSULATING METHOD "M"

- Apply one coat of approved rubber cement allow to dry.
- Apply self-fusing synthetic rubber tape 1/2" thickness equal to original insulation.
- For Circuits Above 2,000 Volts, use "C" type taping.
- Apply self-fusing synthetic rubber tape 1/2" thickness equal to original insulation.
- Apply self-fusing synthetic rubber tape 1/2" thickness equal to original insulation.
- Apply two layers of self-fusing synthetic rubber tape, half lapped.
- Number tapes shall be rolled after application with con. tape roller.

INSULATING METHOD "B"

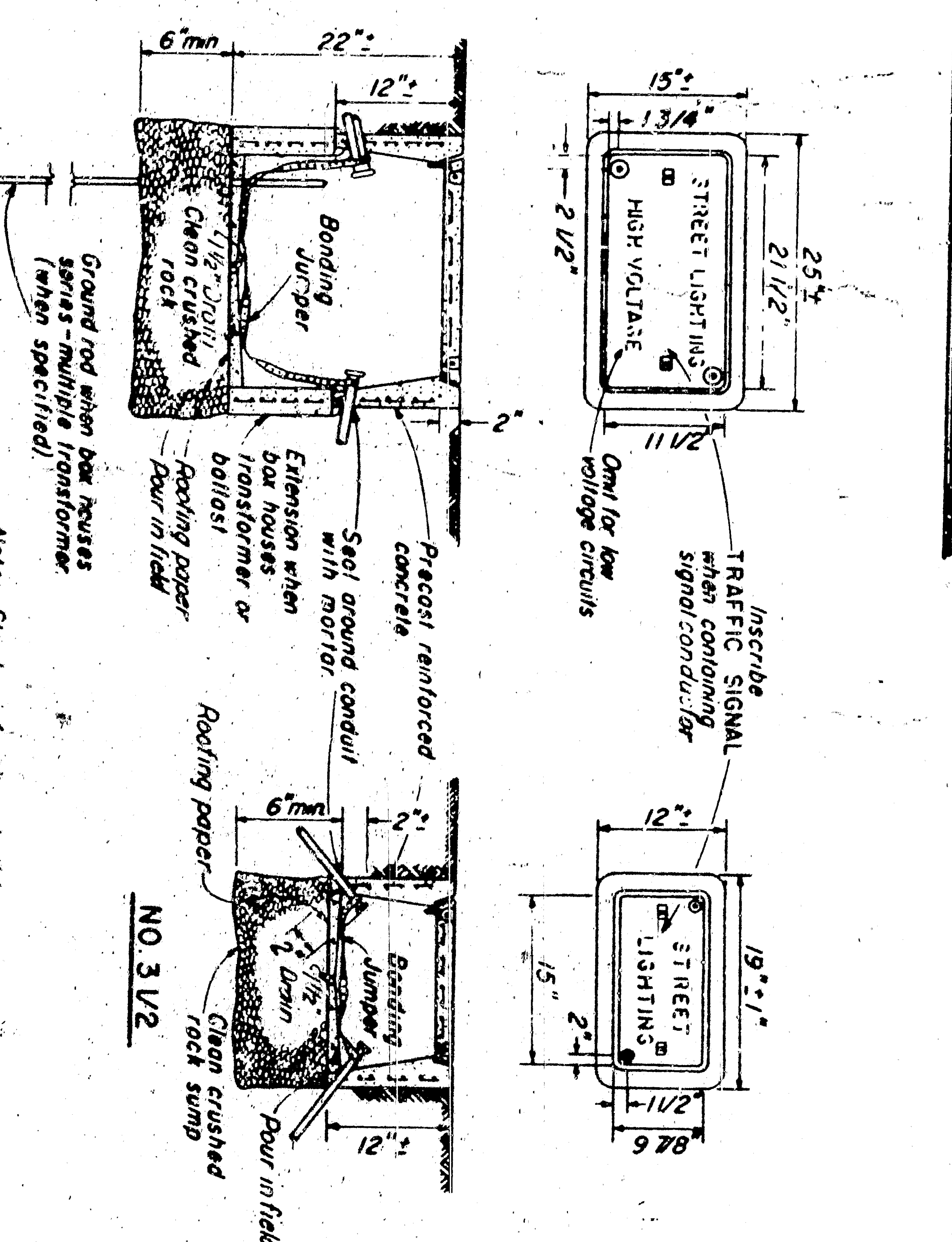
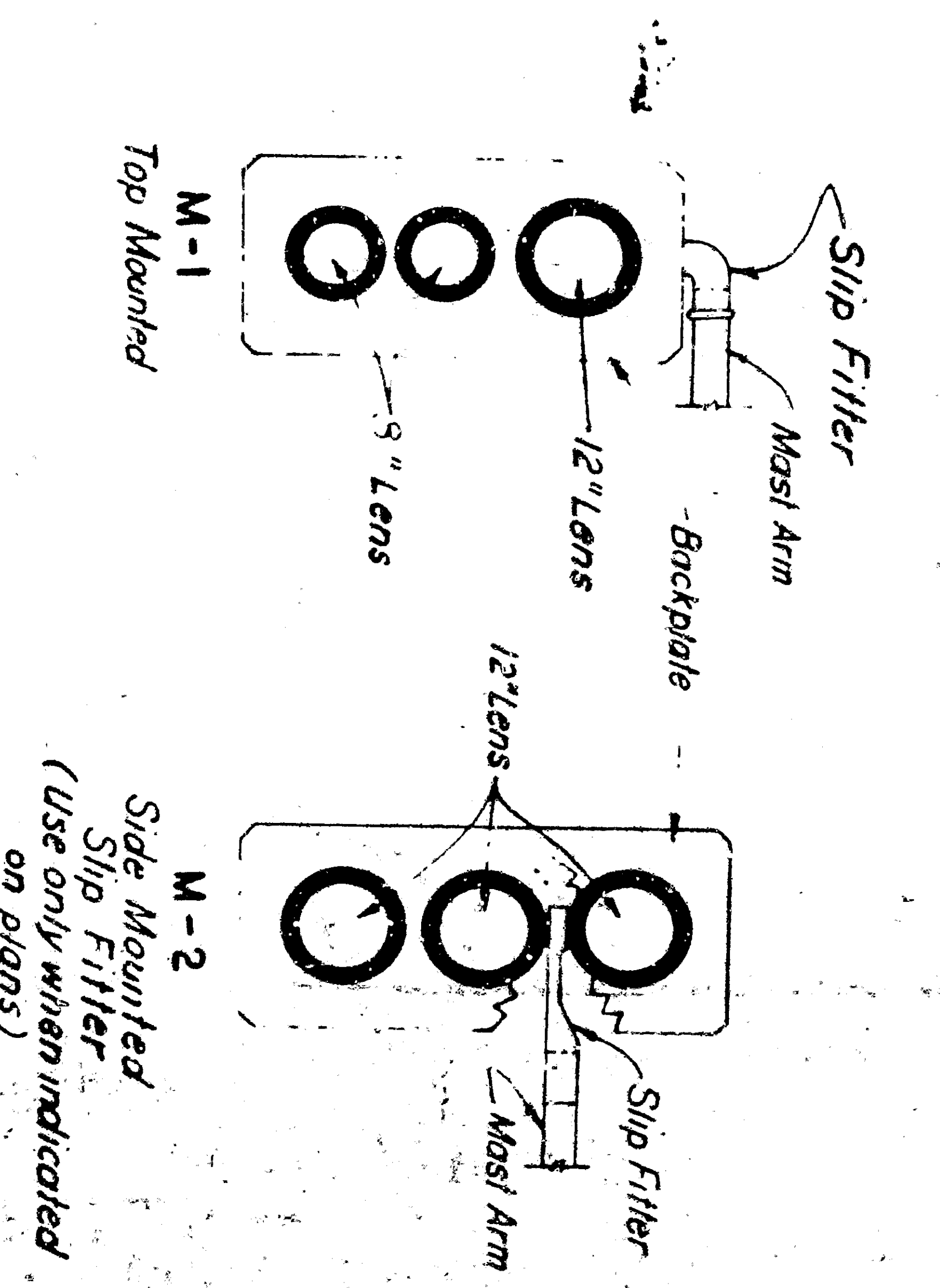
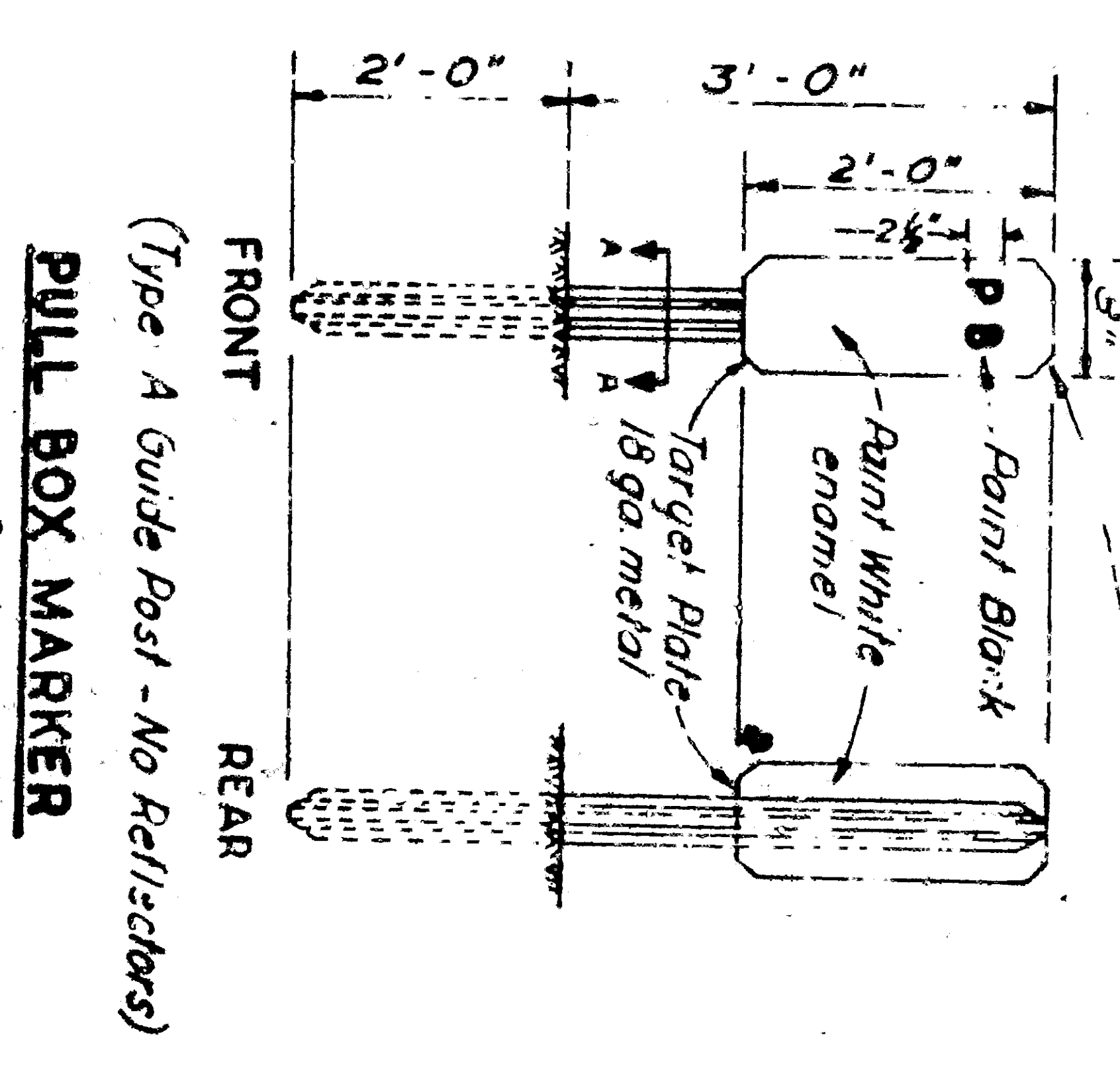
- Apply two layers of self-fusing synthetic rubber tape, half lapped.
- Apply 0.07 thick PVC tape to thickness equal to original insulation.
- Apply two layers of asphalt impregnated open mesh fabric tape, half lapped.
- Coat splice with same compound as in tape and use in.

SPLICING DETAILS

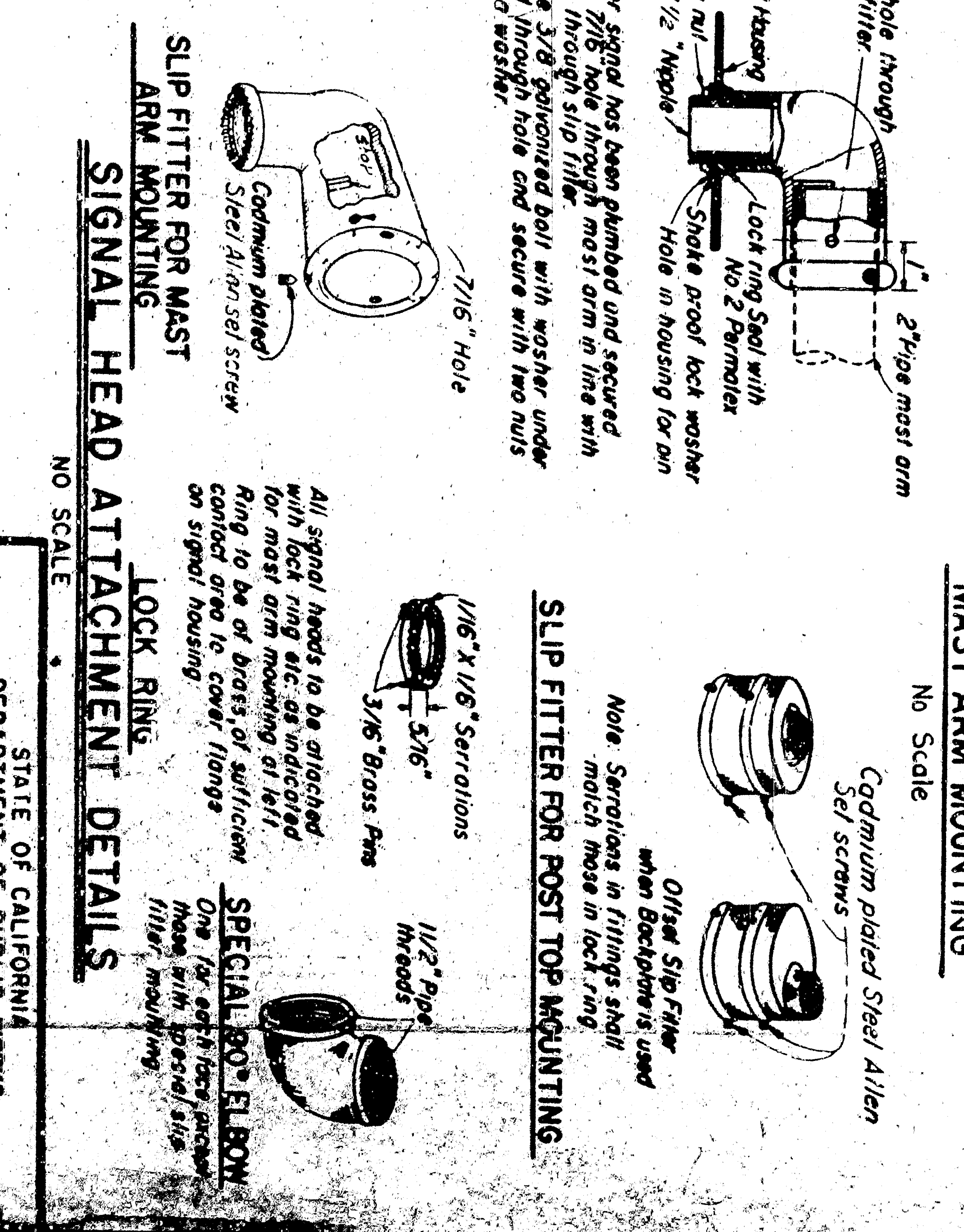


ISOLUX LINES OF MINIMUM HORIZONTAL FOOT CANDLES

Shielded Highway Lighting Luminaires 30' Mounting Height,
20,000 Lumens Mercury Vapor Lamp



PULL BOXES
NO SCALE

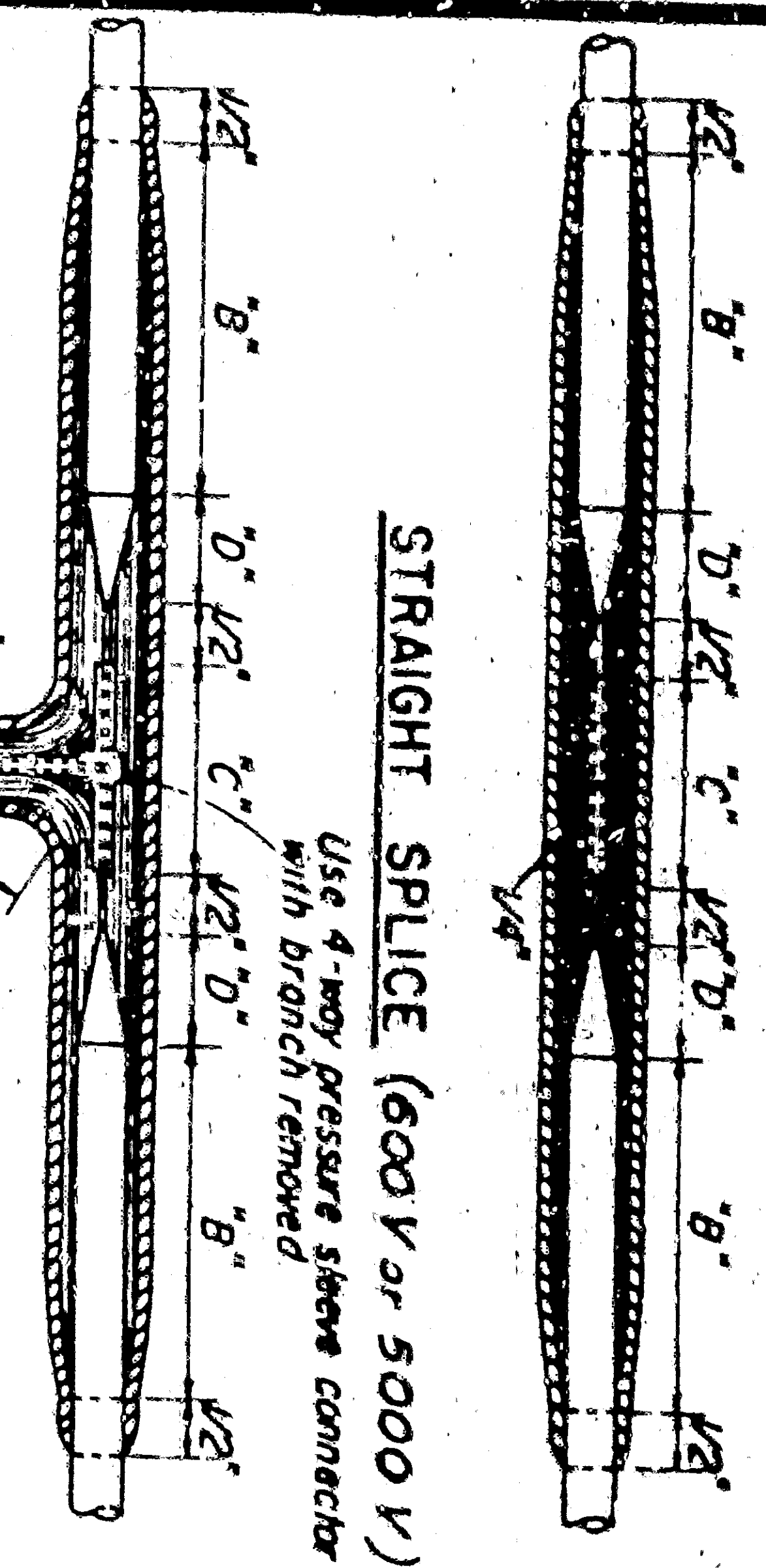


STANDARD DETAILS NO. 3
TRAFFIC SIGNAL AND HIGHWAY LIGHTING INSTALLATIONS

STATE OF CALIFORNIA
DEPARTMENT OF PUBLIC WORKS
DIVISION OF HIGHWAYS

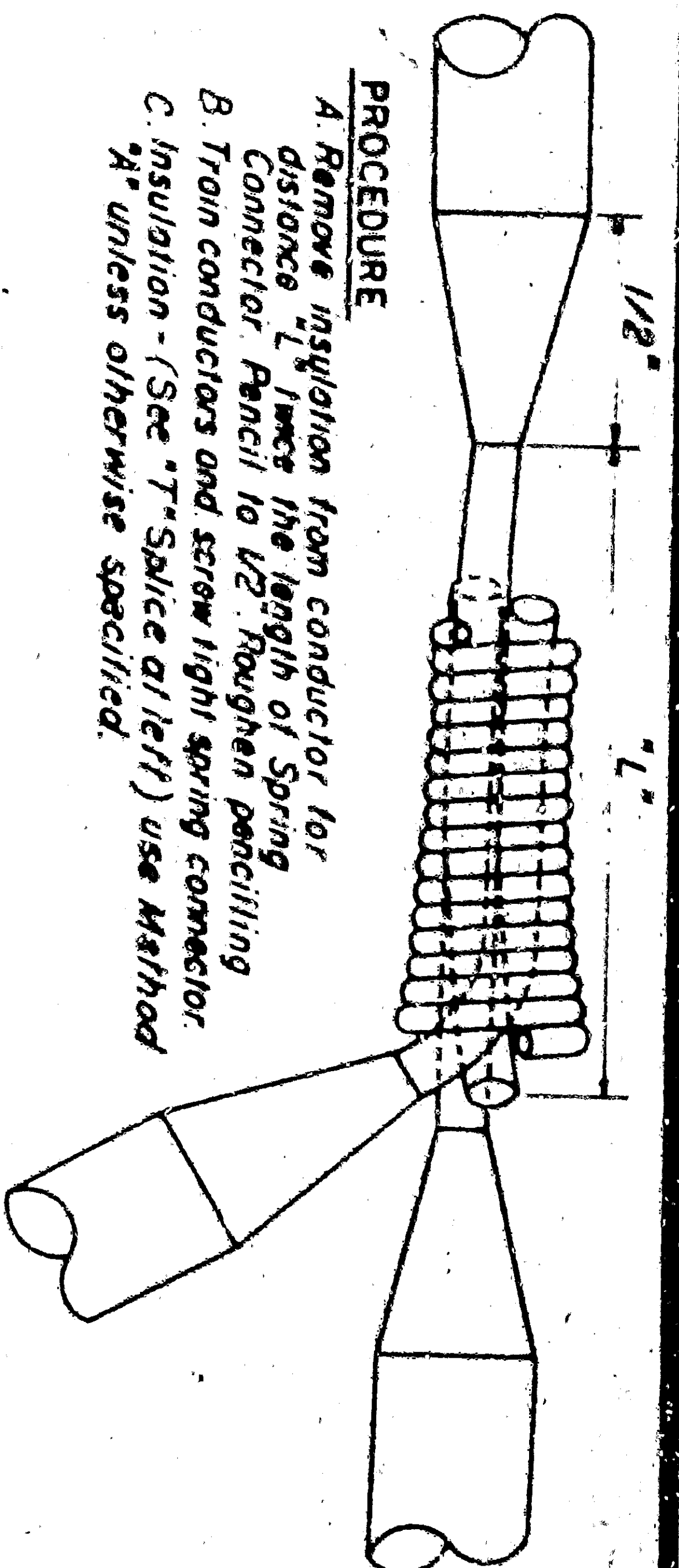
SCALE AS NOTED
REV DATE 6-27-58
DRAWING NO. E

DATE: 1958
PROJECT: HIGHWAY LIGHTING
SHEET: 10
DATE: JANUARY 9, 1959
TITLE: STANDARD DETAILS FOR LIGHTING
DRAWN BY: [Signature]
CHECKED BY: [Signature]
TO ACCOMPANY PLAN DATE: [Blank]



STRAIGHT SPLICE (600 V or 5000 V)

Use 4-way pressure sleeve connector with branch removed



ALTERNATE 600 VOLT 1" SPLICE ELECTRICAL SPRING CONNECTOR

No. 14 AWG and larger

INSULATING METHOD "A"

600 VOLT "T" SPLICE

(Up to 10 AWG only)

STRAIGHT SPLICE DIMENSIONS - Inches		
AWG	"B"	"D"
600 Volt 14, 12 or 10 Solid	2"	1 1/2"
600 Volt 8, 6, or 4 Stranded 2 1/2"	1 1/2"	1"
5000 Volt 8 Solid	3 1/4"	1"
T-SPLICE DIMENSIONS - Inches		
AWG	"B"	"D"
600 Volt 14, 12, or 10 Solid	2"	1 1/2"

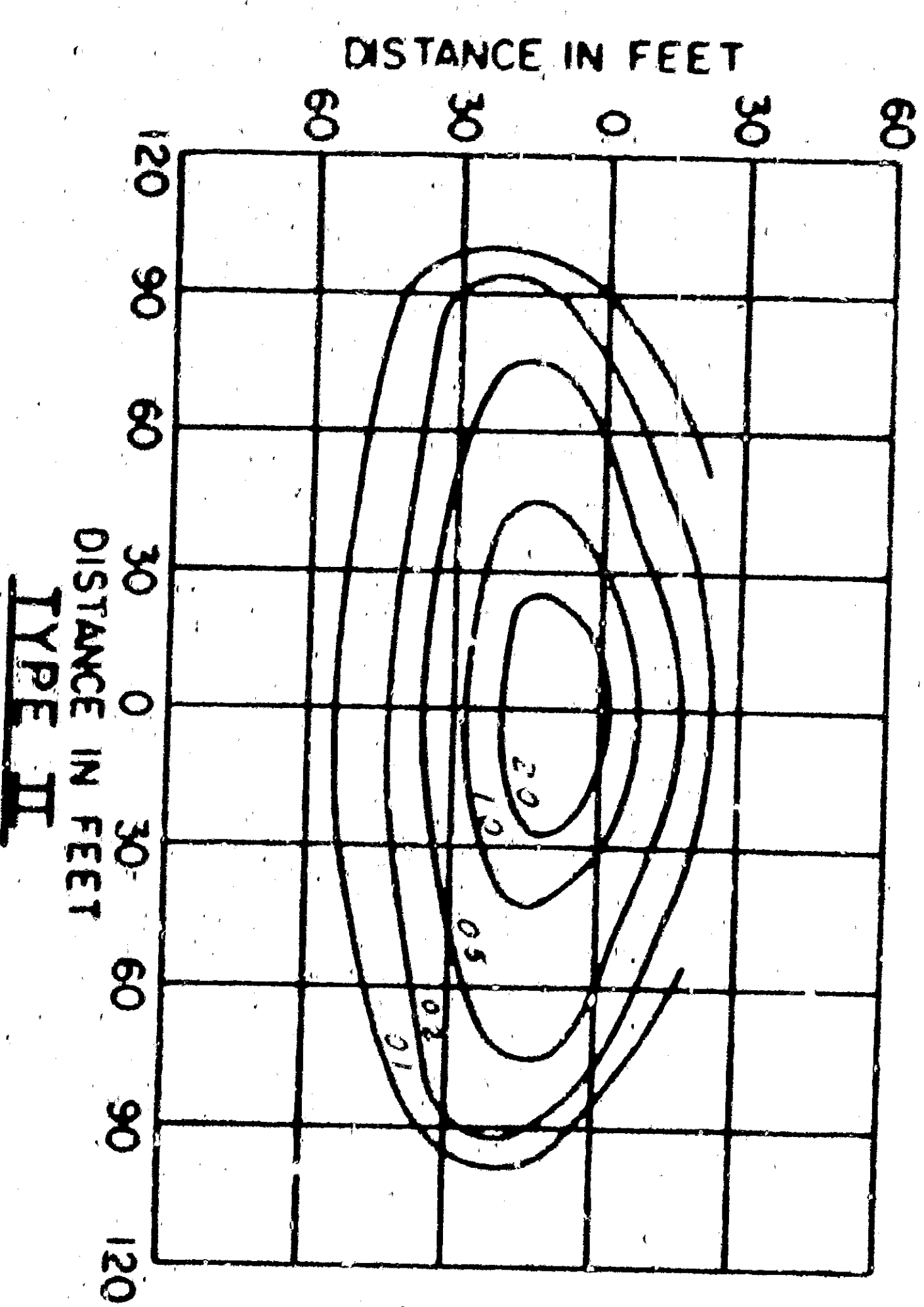
- 1 Apply one coat of approved rubber cement allow to dry for Circuits up to 5,000 Volts
- 2 Apply self-fusing synthetic rubber tape 1/2" thick equal to original insulation
- 3 For Circuits Above 5,000 Volts, the same as applying, apply self-fusing synthetic rubber tape 1/2" thick equal to original insulation
- 4 Apply two layers of self-fusing synthetic rubber tape, half lapped, outer tapes shall be rolled after application, with consecutive tapes

INSULATING METHOD "B"

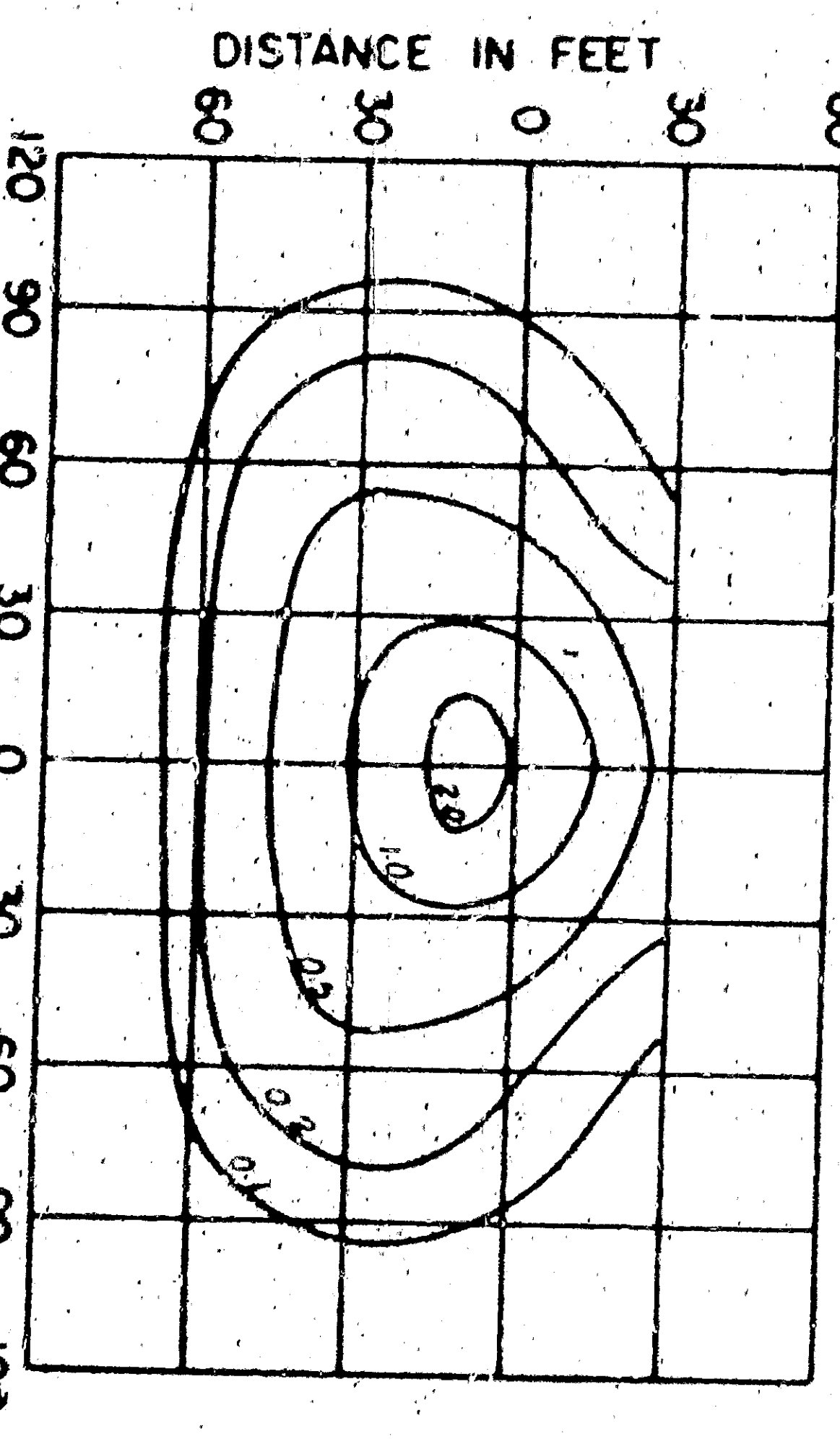
- 1 Apply two layers of self-fusing synthetic rubber tape, half lapped
- 2 Apply 3/8" thick PVC tape to thickness equal to original insulation
- 3 Apply two layers of asphalt-impregnated open mesh fabric tape, half lapped
- 4 Coat splice with same compound as in tape and use in

SPLICING

DETAILS

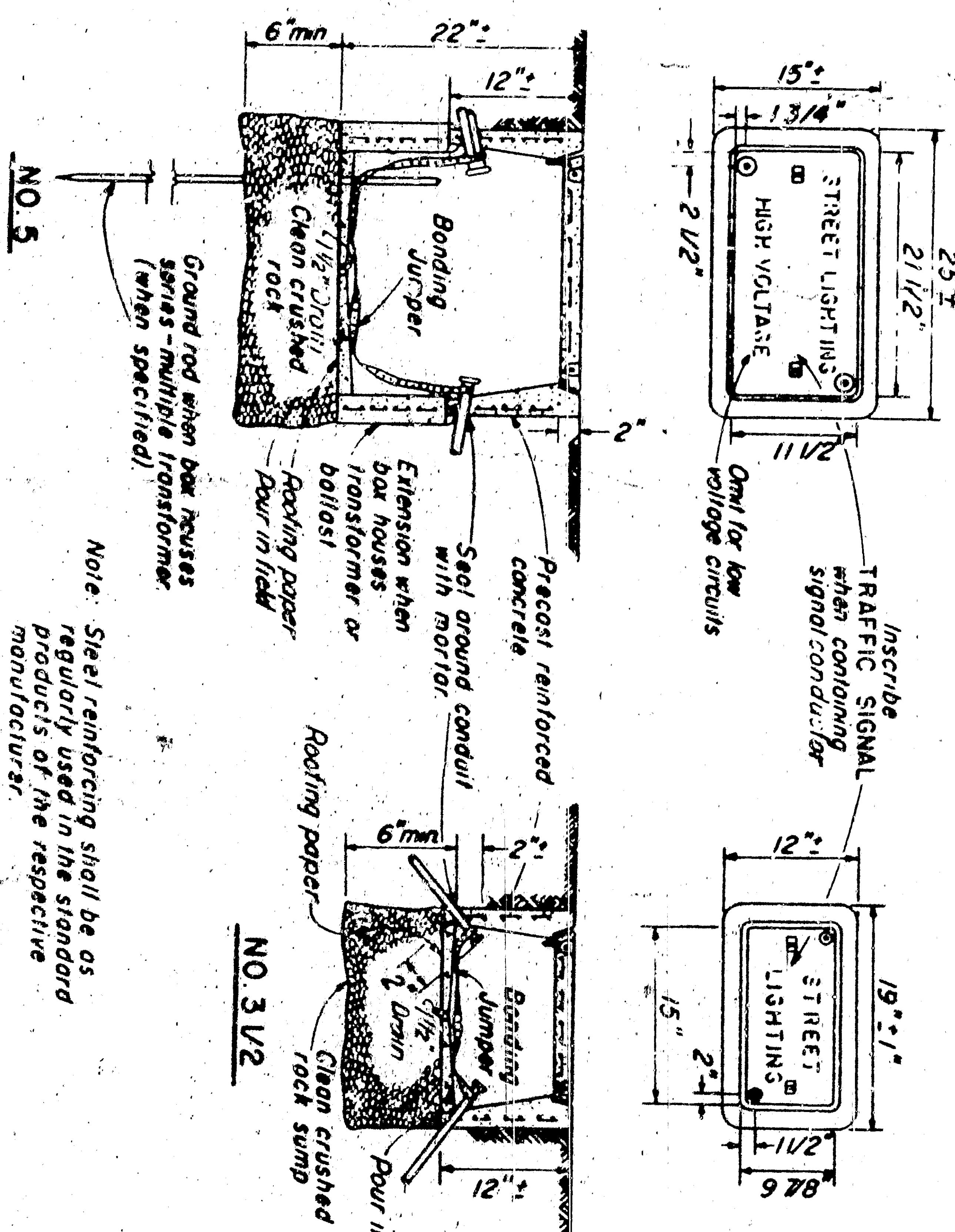


TYPE II



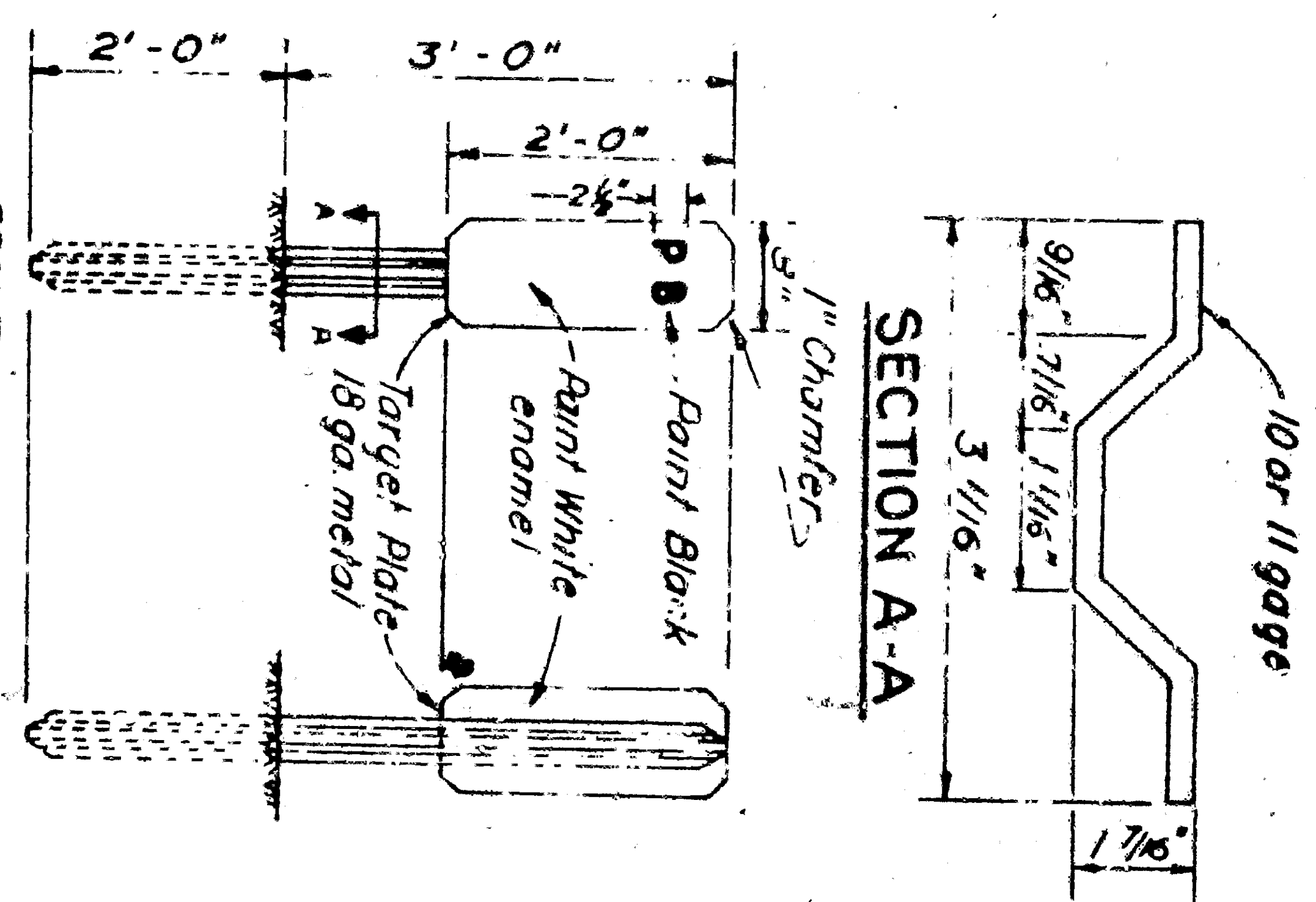
TYPE III

Shielded Highway Light, Luminaire 30' Mounting Height, 20,000 Lumen Mercury Vapor Lamp



PULL BOXES

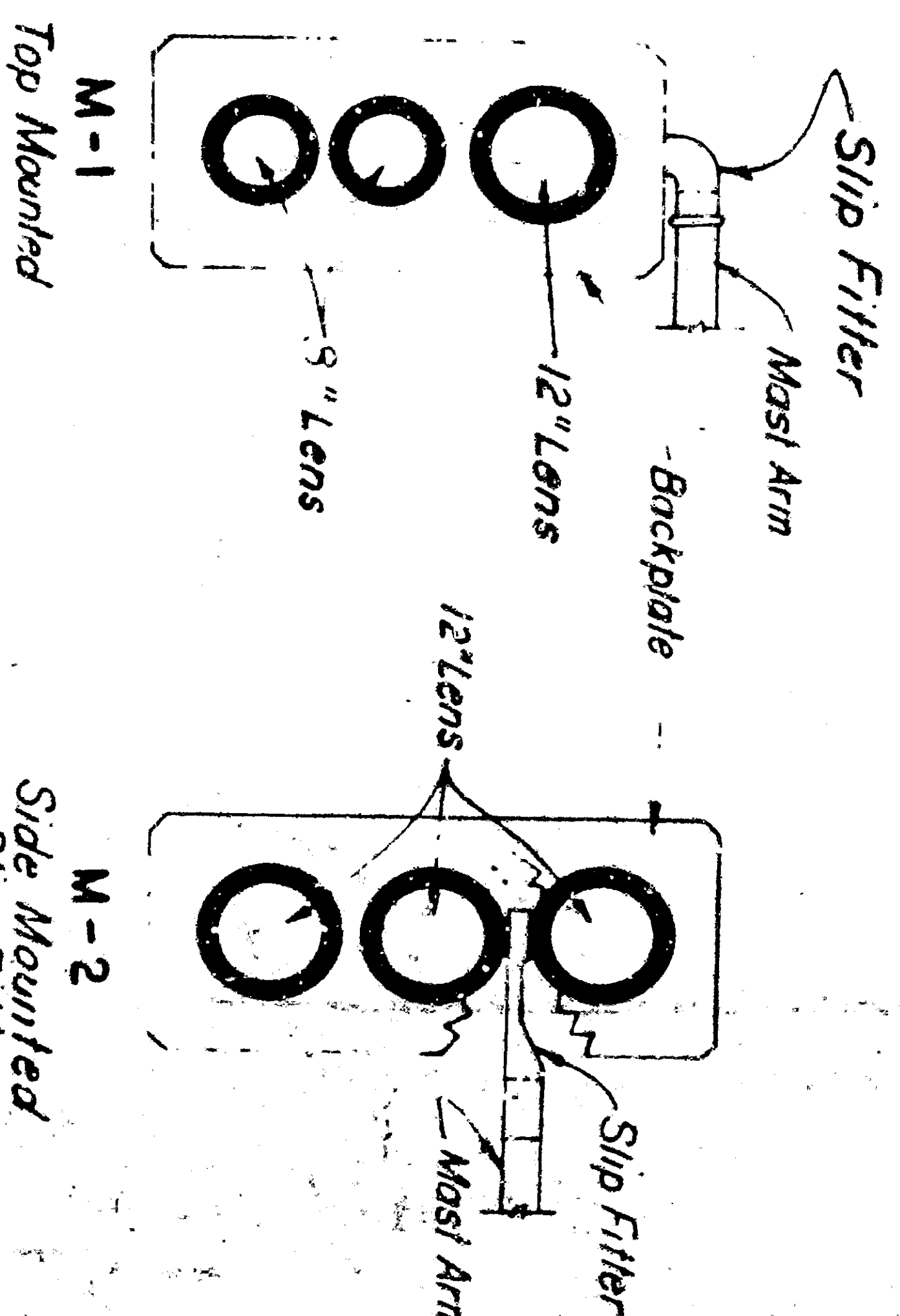
NO SCALE



SECTION A-A

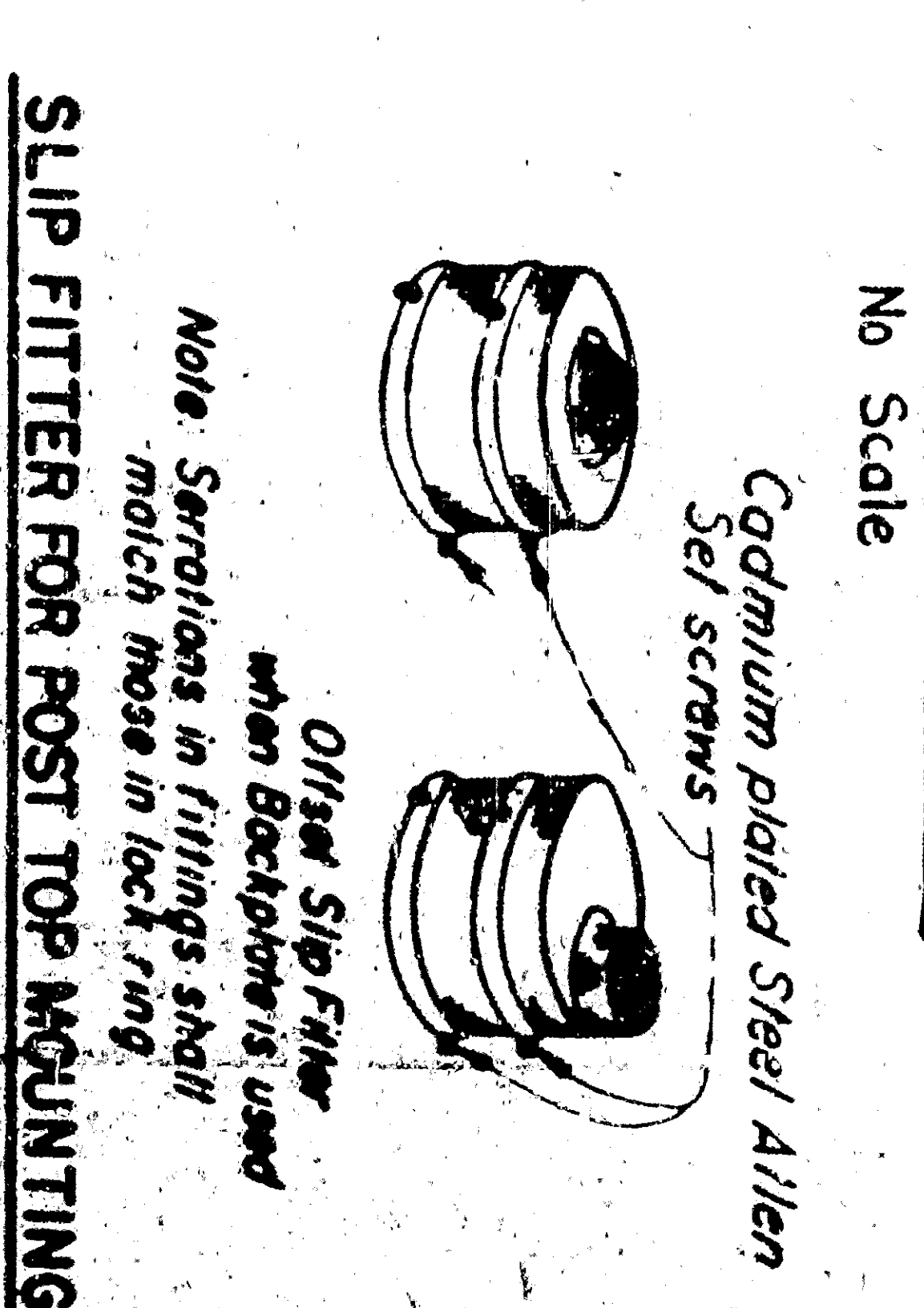
PULL BOX MARKER

No Scale

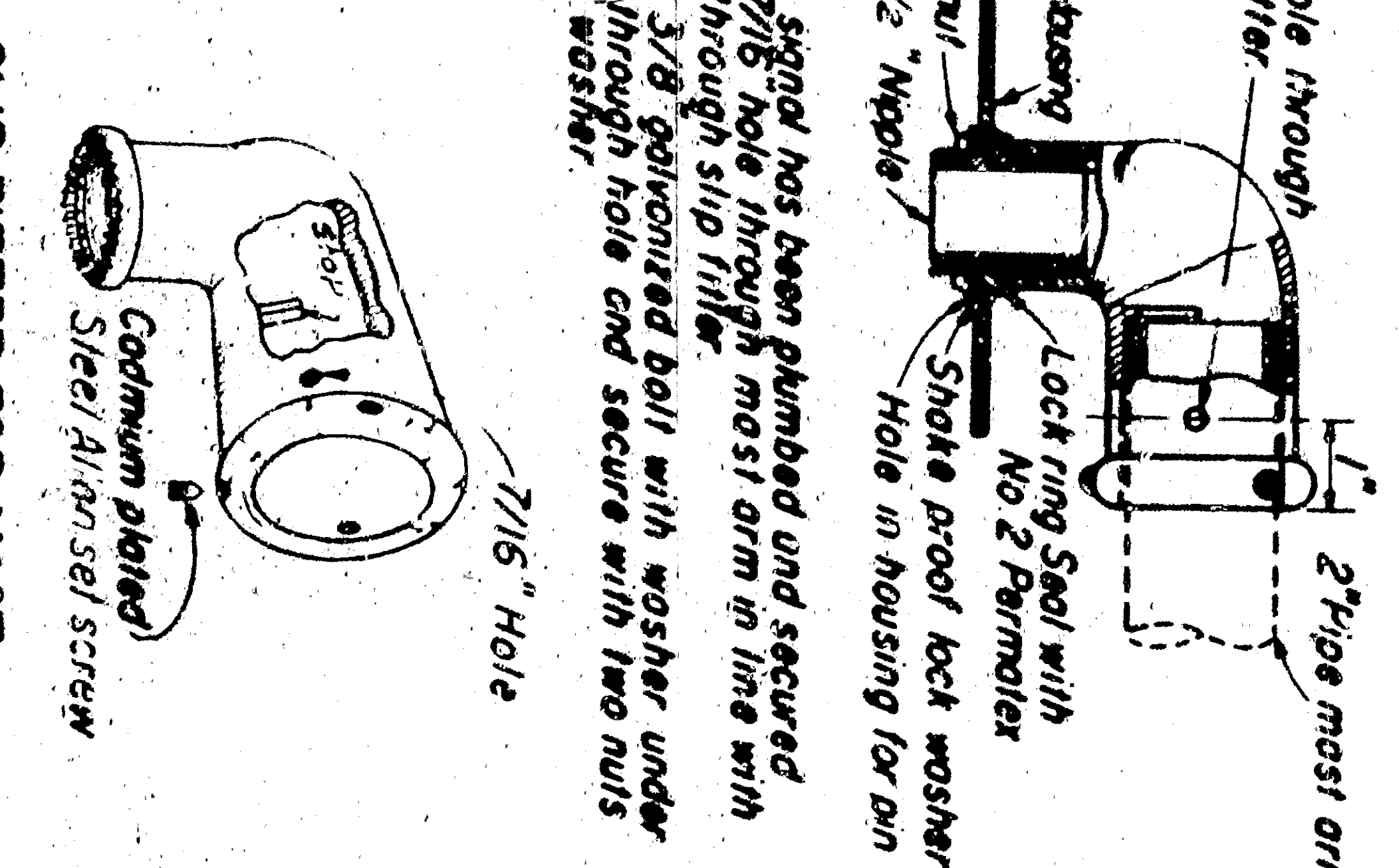


MAST ARM MOUNTING

No Scale



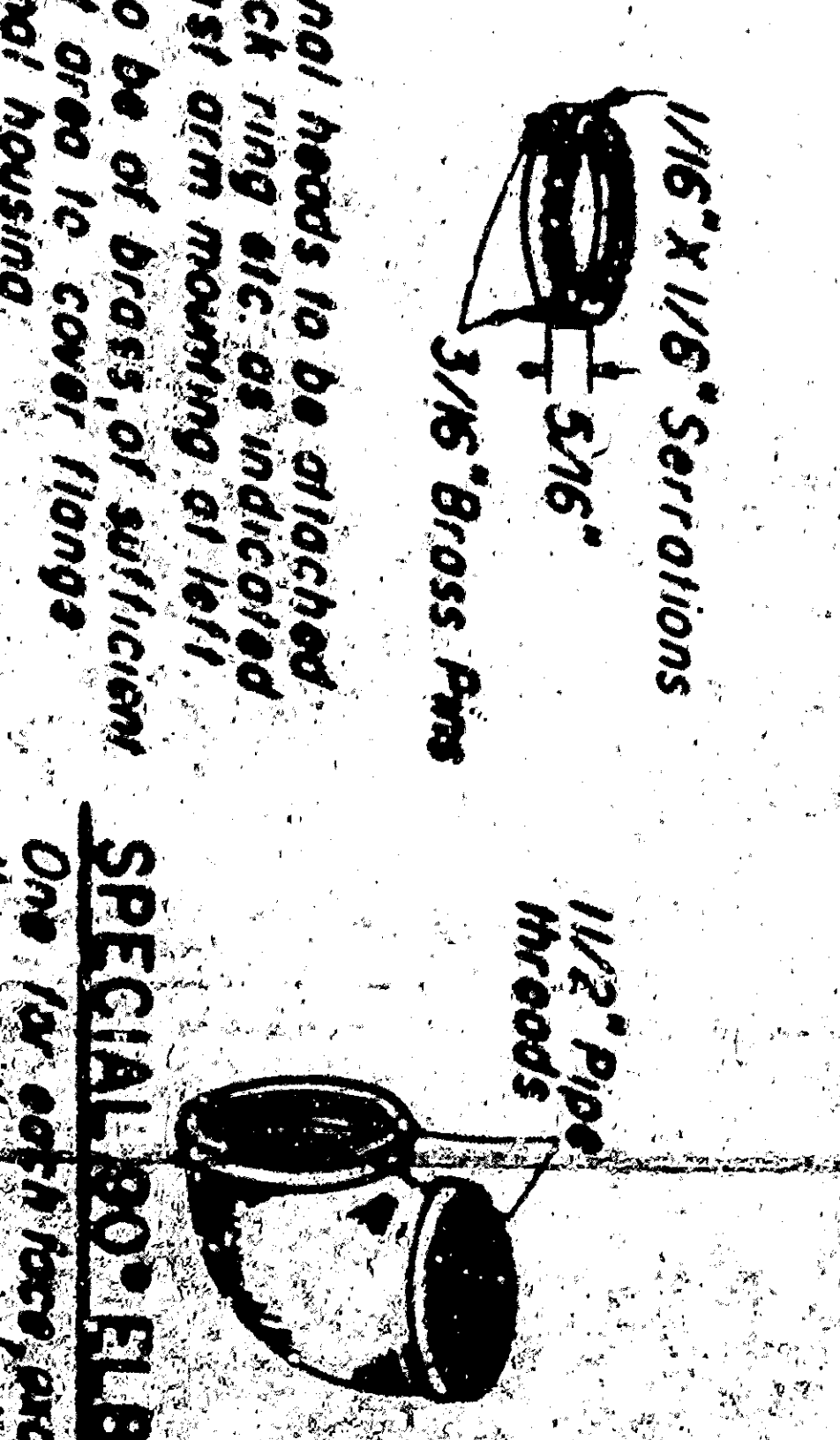
SLIP FITTER FOR POST TOP MOUNTING



SLIP FITTER FOR MAST ARM MOUNTING

SIGNAL HEAD ATTACHMENT DETAILS

No Scale



LOCK RING

No Scale

STATE OF CALIFORNIA
DEPARTMENT OF PUBLIC WORKS
DIVISION OF HIGHWAYS

STANDARD DETAILS NO. 3
TRAFFIC SIGNAL AND
HIGHWAY LIGHTING
INSTALLATIONS

SCALE AS NOTED
REV DATE 6-7-58
DRAWING NO. E